

Registrar Office

April Lenhart
Cindy Swarner
Breanna Gill
Kellie Pinard
(360) 953-7040
registrar@minidairygoats.org

Membership

Krystal Kerns
members@minidairygoats.org

Customer Service

(360) 918-3864
customerservice@minidairygoats.org

Office Hours

Monday - Friday
10:00 am - 6:00 pm EST

Mailing

Whenever possible, please use our
online services.

Mailing address for membership,
registrations, and general corre-
spondence sent via general postal
mail:

Miniature Dairy Goat Association
322 S College Rd #1022
Wilmington NC 28403

Miniature Dairy Goat Association Mini-Goat Notes



Letter from the President

MDGA has had a very productive summer with a growing number of registrations and membership. Breeding season is upon us and with that comes brand new freshenings and revised goals for the upcoming year. It's the time to start thinking about signing up/ renewing Milk Testing, DNA testing, Shows (Live and VShow) for the next year, and membership renewals. MDGA has program chairpersons available to answer any questions in helping you get started in proving your herd in whichever ways you choose. We appreciate and thank each and every member for your help and support in promoting our mini breeds. Have a happy and successful breeding season!

~Cassandra Baldovinos~
MDGA-President-2023

In This Issue

<i>Letter from the President.....</i>	<i>1</i>
<i>MDGA News.....</i>	<i>2-3</i>
<i>Upcoming Live Shows 2023.....</i>	<i>2</i>
<i>Milk Stars.....</i>	<i>4</i>
<i>Letter to the Editor: Supportive Care for Critical Goats.....</i>	<i>5</i>
<i>Notes From the Mini Goat Folks: Breeding & Winter Prep.....</i>	<i>7</i>
<i>Tips from a Goat Milk Business.....</i>	<i>10</i>
<i>Mini Goat Classifieds.....</i>	<i>11</i>
<i>Photos from the Mini Goat Folks.....</i>	<i>11</i>
<i>Recipe: Double Layer Pumpkin Pie.....</i>	<i>12</i>
<i>Goat Gadgets:</i>	<i>12</i>
<i>2022 Top 10 Milk Testing Results.....</i>	<i>13</i>

MDGA Board

Cassandra Baldovinos
President
cassandra@minidairygoats.org

Dee Daniels
Vice President
dee@minidairygoats.org

Kellie Pinard
Treasurer
kellie@minidairygoats.org

Roxanna Willoughby
Secretary
roxanna@minidairygoats.org

Michelle Wittke
Director
michelle@minidairygoats.org

Erik P. Brown
Director
erik@minidairygoats.org

Katie Scott
Director
katie@minidairygoats.org

Milk Program

Dee Daniels
Milk Test Chair

Cassandra Baldovinos
Milk Test Coordinator
milktest@minidairygoats.org

**Tattoo Letter
for 2023**

R

MDGA News

Wondering how to get more awareness and interest about or even start live shows for Miniature Dairy Goats in your area? Why not form a club? There are clubs being created across the country, working together to make mini milkers a big presence. Have you created a club and want to have your news, events, and stories shared? Send an email to newsletter@minidairygoats.org to get details on how to have your club featured in future newsletters.

Upcoming Shows 2023

KY Mini Dairy Goat Fall Classic
Edmonton, KY - Metcalfe County Fairgrounds
Jr and Sr Does - Mini LaMancha & AOM
Combined Bucks AOM
2 rings - September 30, 2023

*Deck the Stalls Texas Mini Milklers Miniature Dairy
Goat Show*
Brenham, TX - Washington County Fairgrounds
Jr and Sr Does - Mini Nubian
2 rings - October 7, 2023

MDGA Membership

Membership Total - 1773

Total Number of Animals per Breed

Mini LaMancha - 7122
Mini Nubian - 19,975
Mini Oberhasli - 565
Mini Guernsey - 31
Mini Saanen/Sable - 305
Mini Toggenburg - 184
Nigerian Dwarf - 3061

All totals as of 9/7/23

Program Chairs

MDGA Shows

Kerry O'Neal
Live Show Chair
show@minidairygoats.org

Ed Kinser
Judges Training Chair
ed@minidairygoats.org

Josie Kirby
V-Show Chair
vshow@minidairygoats.org

Other Programs

Carla Kirby
Davis Testing Chair
davis.testing@minaturedairygoats.net
carla@minidairygoats.org

Kendra Shatswell
Newsletter Chair
newsletter@minidairygoats.org

Michelle Wittke
MDGA Facebook Chair
michelle@minidairygoats.org

Thahn Duong
Artificial Insemination
Committee Chair
ai@minidairygoats.org

*See an article in Mini-Goat Notes
that you would like to share?
Unless stated otherwise, you may
share the articles as long as you credit
MDGA and the original author!*

*Please note that members' views and
opinions are not necessarily those of
the MDGA Board or program chairs.
Implementing any animal husbandry
advice found in Mini-Goat Notes is
done at your own risk.*

Virtual Show

The Fall 2023 V-Show is now OPEN for entries!

Judges: Morgan Allen and Sarah Correl

Early entry: 9/1/23 through 9/15/23 – \$10 for 2 rings

Late entry: 9/16/23 through 9/30/23 – \$15 for 2 rings

While our new site has helped tremendously in the time of processing the show, our coordinator still has to check all entries for errors and correct images. With 300+ entries coming in, this takes a little time. To help keep this task moving quickly and get the show to the judges as quickly as possible, please consider the following tips!

- Make sure that all information is correct before submitting. The way you enter the name of your animal as well as any milk stars or show titles, will be displayed exactly as it is shown on the entry form. This also goes for owner/breeder information, dates, and generations. The coordinator does not check each animal for errors in names and titles.

- While uploading your photos in the entry form, please be sure ALL photos are the correct orientation. This does NOT autocorrect upon submission and results in having to manually edit your entry. Use the cropping feature in the photo entry upload to crop your image, crop as tight as possible to better show off your goat!

- When taking your pictures, keep in mind all feet need to be seen, do not take pictures in the grass or with a cluttered background. You want the judge to see all parts of the goat to make an accurate placing. You may be subject to having to retake images. Please refer to the photo submission page on the vshow website for correct photo requirements.

- When entering, please put in an email that you check regularly. If the coordinator needs to contact you about your entry, they must have an email that is current. Check emails regularly the week after entries close. The more promptly you can respond to the emails, the less the show is held up.

- Be sure to verify that you have received a confirmation email after entering the show! If you have not received this, your entry likely did not go through and was not received by the V-Show coordinator.

- The V-Show coordinator uses the same photo upload process as the membership when correcting entries. Entries with significant errors (such as incorrect photos) will have to be resubmitted in its entirety by the member.

- If you have issues, please contact the coordinator asap so that they can help you with any problems! For fastest response, send emails directly to vshow@minidairygoats.org rather than MDGA customer service and MDGA registrars

*Be sure to check out the MDGA website and Facebook page for
the most up-to-date show listings and announcements!*

Milk Stars

We'd like to recognize the following animals that have earned their milk stars between the time period of June 1, 2023 - August 31, 2023

Bucks

Green Gables MB Amazing Comet +*B -
Eliya Elmquist
Blackberry's PP Rain Man +*B - Kellie Pinard
One Nine Acres Bama Boy +B - Kellie Pinard

Mini Nubian Does

Windswept's Rosemary *P - Summer Rudolph
Cornerstone Farm Jasmine *P - Summer Rudolph
Windswept's Basil *P - Summer Rudolph
J3 Critters Jade *P - Summer Rudolph
FCH Kingdom Acres HB Feliz *P - Tiffany Hunter
Rubystar BTR PC Bonny Bell *P - Sarah Donaldson
Genoa Meadows Pippi Long Ears *P - Katherine Turner
Mosaic's Feisty Firefly 3*P - Courtney DuCharme
Mosaic's Flower Child 4*P - Courtney DuCharme
Olde Pine Willow *P - Becca Watts
Inspiration Flute *P - Anne Larson
RunningDrum Alpine Frost *P - Anne Larson
Basil Leif Goatery Harmony 2*P - Anne Larson
W4's Wind in the Willows *P - Lisa Stoke
Lil' Rascals Ivy Kisses *P - Amber Alexander
Thundering Hooves Magpie *P - Lorene Foster
Thundering Hooves Juliet *P - Lorene Foster
Frog Farm Sugars Easter Lily *P - Lorene Foster
Bellhouse's Magpie 2*P - Nancy Lingenfelter
Soaring Hearts Beryl 2*P - Wendy Valentine
Soaring Hearts Pepper 2*P - Wendy Valentine
Green Gables AC Tria 5*P - Michelle Wittke
Wynott's Jamison *P - Michelle Wittke
Golden Plains FW Mayflower 2*P - Sarah Drga
Golden Plains CF Just Cumin Along 2*P -
Sarah Drga

Golden Plains IB Moonlight Sonata *P - Sarah Drga
Golden Plains IB Cinderella 2*P - Sarah Drga
Rosies Critters Black Beauty BB 3*P - Rose Shinkle
Daystar's Princess Catmint *P - Rose Shinkle
Giving Tree's Moonpie and RC Cola *P -
Kellie Pinard
Rite Choice Oops-A-Daisy *P - Kellie Pinard
Rite Choice Annie Oakley 3*P - Kellie Pinard
Rite Choice Falling For You *P - Kellie Pinard
Texas Tykes Wild Willows *P - Kellie Pinard
Rite Choice Leather and Lace 3*P - Kellie Pinard
Texas Tykes Tiger Lily *P - Kellie Pinard
Dandelion Meadows SHQ Jasmine Rose 2*P -
Melody Faville
ZyGoat Farms DH Geillis Duncan *P -
Michelle Taub
Blackberry's BV Snow Drop Obsidian 2*P - Kerry O'Neal
Blackberry's BQ Sapphire *P - Kerry O'Neal
Runnin BC's Olive Branch *P - Robyn Priddy
All En Time's Beth's Cinderella *P - Joanna Snyder

Letter to the Editor: Supportive Care for Critical Goats

Regina Tervo

I have been contacted several times and asked, "How did you bring your herd back from death's door [when they were rescued]?"

I faced, as most goat owners have at one time, a lowly goat. Whether it is from malnutrition, parasites, anemia, mineral deficiencies, wounds or sores, depression, stress, dehydration, fever, low appetite, compromised immune systems or another reason, it is important to address the situation with good supportive care. In my case, I had all of this in every goat in a whole herd. The majority were pregnant. Good to note: I did not lose any does or kids and the does were able to feed their kids while putting on weight.

I do this: I evaluate the goat. Take a temperature to see if I have a goat with a possible infection which will require antibiotics. I call my vet (let him know my situation and order blood draws). I look in eye membranes to see color. Are they anemic? If not, good. If so, I add an iron supplement and get a fecal to determine which kind of parasite I might be dealing with. Give dewormer according to what parasite you are dealing with. Re-fecal in 10 days after deworming and deworm again if needed.

Then I go to my immune system booster kit. Vitamin B12 shot. Iron if needed, probiotics, electrolytes, rose hips if they are eating (vitamin C) and if they are not eating then I give an EmergC pack put in with the electrolytes.

Feed: I give (when eating) high quality horse hay 24/7. If I am trying to get them to gain weight, I add barley, black oil sunflower seeds, and a non-sweet grain feed of high quality with no by-products. I stick to non-GMO feeds. I also feed Chaffhaye (alfalfa with enzymes).

For minerals, it's very important for them to get enough of each in their diet; this is what will help support the immune system. I give kelp on top of their feed twice a day. Plus their loose minerals as well. I feed minerals on top of their feed and

they have a mineral block as well free choice loose minerals. This way I know they are eating the minerals, no one is being left out, and I know who is needing more than others! Copper bolusing every six months is a must for my area of Missouri.

Each and every time I have used my immune system booster kit and the above techniques with diligence and constant checking, I have had positive results on bringing back a whole herd or a single goat.

They say the proof is in seeing. It's hard for me to see the before pictures but it is necessary for teaching.

Now think about all the important organs, muscles, gut, and immune system that you can not actively see without scopes or blood test. People need to realize how important the quality and quantity of the minerals & vitamins are for the survival of your goats.

An unhealthy animal will have a dull coat, lack of brightness in the eyes, have a weakness in the hind quarters, hunch their backs, and may walk not as free moving because their strength in general and especially in the hindquarters is lacking. Notice the pictures of Meow; on the left "before" picture, her back is hunched up. Hindquarters look weak. She looks stiff-legged, coat dull.

This was only three of the rescued herd. I am sharing so that we can all learn, to improve upon our goat husbandry skills, making what they went through is a positive for goats in the future.

continued on page 6

Letter to the Editor: Supportive Care for Critical Goats

continued



Here Meow (pregnant) shows you as a rescue from that day, how important minerals & vitamins are to the goat! For one what you can see is her coat color! The right photo is a year later; with a year of good minerals & vitamins and good quality feed, she shows you a beautiful dark chocolate coat by kidding time. She doesn't even look like the same doe!



Left and right is Angel. She was seven months old in the left photo, stunted between three months and ten months old. In the picture on the right, she is two years old, ready to kid for the first time.



Snow on left the day of rescue and on the right a year later with a daughter, Faith. She will retire here with Faith.



Notes From the Mini-Goat Folks: Breeding Season & Winter Prep

A. How are you preparing for breeding season? Do you AI, hand breed, pen breed etc.?

B. How are you preparing for winter, if you have already started?

Jamie L Butler

A. I hand breed. I put a buck fenceline by the does a week ago. So far no heats but this encourages heats and several does have been smelling and rubbing up against him so just a matter of time.

B. Prepping for winter is just the big job of doing another barn cleanout. As we get close to first frosts, I'll be pulling all automatic waterers and hoses/splitters and putting plastic on windows or screen doors.

Klaudia Faught

A. I pen breed; I CIDR between 4-6 at a time and then after removal leave them penned with the appropriate buck for a week. We do this about 2-4 times depends on how many does I have to breed.

B. Winter prep is crazy; we wean our last kids and dry up our does. (No milking in the cold for me). Then we clean up our milk room and shut it down. After that we just ride it out until the cold hits, and we start our straw bedding that will get taken out in the spring. We also usually break out the trough heaters and check that they work so we can keep our water unfrozen.

Natalie Epler

A. This year I am AI-ing some for the first time. My goal with AI-ing is to create a herdsire, bringing in new genetics. I will hand-breed as does come into heat. It helps me be prepared for when does are due so I can separate from the herd and into kidding pens.

B. Prep for winter includes drying up the does in November. In the Fall I clean out all the pens and prepare for deep bedding. Water pipes need insulation and we stop using one completely so we don't risk a pipe bursting in the barn (again). We grow our own hay and have a huge hay loft so that winter prep is something we get done by August. We put up straw and round bale cornstalks for bedding. I will send clipper blades off for sharpening and inventory things like milk machine parts and tattoo kits. I like to watch black Friday deals to save on the items I'll need for the next

year's kidding, milking, showing seasons. Renew memberships with associations as needed, send in scale for recalibration, binge listen to my favorite goat podcasts, and hopefully update my website.

Melissa Swartz

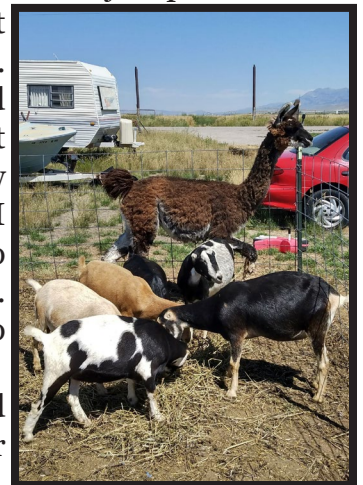
As for breeding we hand breed, I want to know each and every breeding date, no guessing.

As for preparing for winter...obviously bring in enough hay to get through winter and kidding season, as well as grain. Getting all the barns clean and dusted for odors and bugs. Prepare the does and bucks for breeding season by trimming feet, giving shots like Bo-Se, worming if needed, copper, and zinc. We like to boost the goat's immune system with extra garden scraps and plants, pumpkins in fall. We bring in a large amount of fir and pine branches for them to eat. We are also checking all the extension cords making sure they work and putting them out.

Jessica Gardner Bischoff

A. We already have our does in with the bucks! Last year we brought the doe or buck to each other and hand bred. It worked okay due to limited pen space where we were unable to separate the girls with the boys. It was also a tad inconvenient with our busy schedules. I am happy to just have them together again this year. I watch closely for signs of heat and being bred then keep records to know when the doe will be due to kid. I only ever miss maybe one breeding a year and just plan from the first time the buck went in until he was pulled. With our hard and cold winters in Idaho I want to be ready and know when to expect kids. I don't want to come out to surprise popsicle babies. This last year we got to -30°F for a few days!

B. I am already behind getting ready for winter



Notes from the Mini Goat Folks: Breeding Season & Winter Prep

continued

and the list is long. I need to clean up my areas that store our hay and straw. I also need to strip out my barns and remodel them for better storage. I have my stalls stripped and ready to be freshly bedded for the does to start kidding in as well as my kidding kit together in my house ready to go. I am currently freeze drying my goat milk for emergencies. We also raise Boers and if they breed and kid first (which my Boers are the only ones cycling this week!), I like to have my milk ready to go. I just added new mineral tubs, protein blocks, TM with Selenium block, and fresh loose mineral free choice (The rest of the year I just have loose mineral and a T.M. with Selenium salt block for them.)

Carla Kirby

We start with all our herd maintenance to prep for the breeding season which includes EPG counts, dewormer if necessary, Selenium (BoSe injection), copper, weights, & blood draws for testing. We hand-breed to know exact dates; we will also be doing some AI on natural heats. Bucks pretty much have the same protocol however we start increasing their protein. As far as winter - mostly just store as much hay as possible.

Crystal Eutsler

This time of year prior to breeding, we BoSe and review kidding records for each doe. We want to stay in milk year round so we have an extended kidding season. Once we look at the records of when each doe kidded last, we set the dates we plan to breed each doe (we hand-breed because I don't like surprises in the barn and to ensure we have year round milk) and who we will breed to. We choose a buck for each doe based on what genetics we find cross well and will improve traits we need to improve on the dam. We keep detailed records of those plans and follow up with notes about trips to the breeding pen. Once they are confirmed, we add the expected date of birth and even the name choices in those records. Before the does kid we will draw blood for testing and give another round of BoSe.

Winter prep requires complete barn cleaning. Removing any produces in the milk room or barn that can freeze. Packing the loft with needed bales

of alfalfa, pulling down out of the loft the heated buckets and water heaters. Hang the very short hose next to the water spigot so we can fill the buckets and trough when all the long hoses would freeze up. (Our troughs and buckets are positioned very near the spigot on the goats' side of the fence. We cut off an old hose just long enough to reach the trough or buckets - this makes it less than 2 feet long. We take it off the spigot after each use and hang it up. This ensures we can always fill water during the frozen days of winter).

Wendy Valentine

We hand and pen breed depending on circumstances - using CIDRs more and more to control timing. This year will be collecting bucks for first time and beginning the AI adventure.

Joanna Snyder

In prep for breeding season, I worm those who need it, give BoSe to all does to be bred and boost feed about a month before breeding season begins. I selectively hand breed my goats; I like to know approximately when to expect kids and when to give a final dose of BoSe before they kid. Most of my babies are born in the winter so being prepared is crucial to safe deliveries and healthy kids.

I have Wi-Fi cameras set up in the barn(s) that connect to my phone so I have the best chance of being there when the kids are born. I keep a large cooler filled with clean towels to help dry the kids quickly along with the essential supplies. I go through a lot of towels! Only once did I walk out to the barn at 5am, snow on the ground, 6° temp to find a set of quads being licked by their mom. One was covered in ice crystals. This doeling came inside with me, wrapped in a heating pad, with a hair dryer and the warmth of the wood stove warming her up. I gave her colostrum that had just stripped from her dam. She joined her sisters within an hour.

A barrel or trough with a Premier1 heat lamp is set up in the stalls for the kids to stay warm inside (keeping all cords out of reach). Making sure the kids are nursing or taking bottles and have fresh dry bedding in a draft free stall once they are dry.

I check in on new kids frequently, especially when it's below freezing in the first two weeks of life but they typically handle it just fine. I do not use coats on goats, not even babies, even if it's really cold.

ZyGoat Farm

We are using the CIDR protocol to breed does in small groups. Our goal is to have them kid during my school breaks (less stress all around we hope with clustered kidding). I am also spacing the breeding groups out to have smaller groups to be in milk and also be in milk longer, a smaller steady supply.

Dee John Daniels

I can hardly wait to get back in the tank this fall! I love the challenge of AI. I will also be using a new Jr Buck on my first fresheners so next spring will be extra exciting.

Taralee Home

I raise standards, minis, and Nigerians and exclusively bottle feed, plus use my milk for herdshares and licensed pet milk. This my second year doing this method and I was really happy with it last year.

I use CIDRs to sync heats on all my does except my first freshener Nigerians. I start with standards, then my minis and the Nigerians. It was very effective last season having the majority of each breed kidding within a few weeks of each other for kid sales. This season I am planning for January and February kids so I start with my standards and basically divide the group of does in that breed into 2 or 3 smaller groups and then stagger the insertions by a week for each group. So I inserted 8 CIDRs last Wednesday, and I'll insert 8 more this Wednesday. They are removed at 14 days and then hand bred when they come into heat 24-48 hrs later.

I do hand breed for the most part. Occasionally if I have several in heat that will be bred to the same buck, I will pen them together for 24-72 hrs.

I will attempt 3 AIs this season and I plan to trial using a CIDR and then planning to AI on the next natural heat cycle, after the CIDR removal - I'm doing this to get them to start cycling so I can AI within my planned timeframe.

Last season my kiddings ranged end of January to first of May. There are two things that happen here in April - and these two things are what prompted

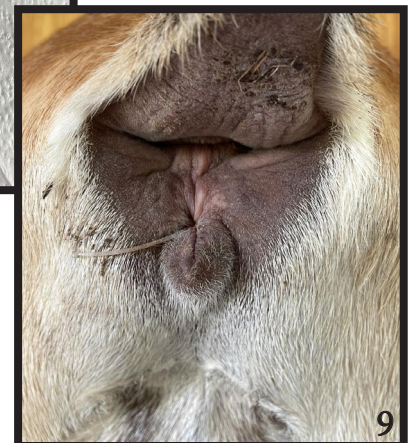
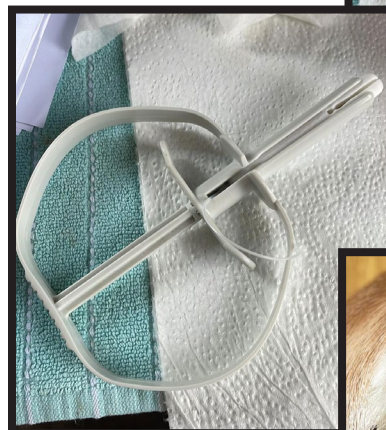
me to choose January-February kiddings this year:
1- our goat market takes a nose dive after Easter/ beginning of April so any unreserved kids are harder to sell

2- mid-April is when our heat/humidity/parasite issues tend to kick up so without a doubt my early kids grow better.

Last season I had a late kid crop out of 5 does that I really wanted bred; I ended up keeping 3 doe kids from those. They have all had the exact same rearing as my earlier season kids and yet just due to the environmental stressors of heat, humidity and parasites, they are smaller - they always tend to catch up but I have found for many years my late April- June kids just take longer to grow.



A bag of CIDRs has 20 and I can buy them for \$100 which works out to \$5 per goat. It's a reasonable investment for me to have more control and less stress over my breeding season.



CIDR before and after insertion - Photos by Taralee Home

Tips from a Goat Milk Business: Edwards Family Homestead LLC

By: Kendra Rudd Shatswell

Established in 2014, this Pennsylvania homestead uses the milk from Oberhasli, Nigerian Dwarf, and Mini Oberhasli, to create a successful soap and lotion and raw pet milk business and offers some insight for those looking to navigate similar businesses.

Soaps and lotions are marketed through festivals, fairs, and local farmer's markets, through business cards, and through a website. Edwards Family Homestead lotions also took first and second places at the 2022 ADGA convention. Each event is an opportunity to expand the customer base. Word of mouth plays a big part as well, as does social media. Engaging social media posts are her daughter's domain, says Heather Edwards, as is keeping thorough records by spreadsheets. Keeping good records is essential to running a business smoothly. The website is run via Square, which is designed for ecommerce, making it easier for small business owners like Edwards Family Homestead LLC to sell online, take card payments in person, and even keep track of inventory. At the year's end, the owner is sent a complete summary of the business.

Recently, the homestead shifted to an LLC. Initially, Heather started asking other small businesses about the process, and the network of other homestead type small business owners pointed her in the right direction. The cost of setting up an LLC varies by state and can be done by the individual or with the help of a third party professional such as a lawyer. Heather says it helped to shop around as the fees varied greatly. Heather explained some of the most appealing benefits of an LLC; since the homestead was now recognized as a female-owned small business, she has more loan opportunities. With an LLC versus a sole proprietorship, the family's personal assets

are shielded from lawsuits against the business.

As mentioned earlier, the homestead offers raw pet milk. While not as strict as the requirements for other licensing, selling raw pet milk does require proper labeling, and a license and inspections in Pennsylvania. The license is just \$25 a year, but moving the milk off farm does come with an annual inspection fee per ton. Heather says a great way to market raw pet milk is to offer some to local shelters, especially since the raw milk can easily be frozen for future use.

In addition to the aforementioned costs, keeping a business profitable depends on the packaging and labeling. Heather says all packaging and labeling is done in-house, and they've tried several packaging before settling on what is now offered. Packaging must be able to withstand shipping, offer all the important label information, and - in the case of soap - allow the customer to smell the bars.

Feedback is always important! For instance, customers said they loved the bottled soap and lotion products but wished the labels wouldn't come off or blur when wet. Heather eventually found a waterproof, printable label - "That was one of the hardest things to

find!" Bottle pumps were another challenge and were replaced with a squeeze bottle with a large lid that is easier to use and not prone to breakage.

Creating a successful goat milk product business is truly a lesson in diligence. "We have come so far, myself included. Tons of learning on the way - truly anything is possible if you just believe in yourself and fight for it."



Hard work paying off - note the attractive, informative labels - photo by Heather Edwards

Mini Goat Classifieds

Members, shows, and clubs - you can advertise your farm, organization, or event to other MDGA members! Fill out the online form at <https://miniaturedairygoats.net/mini-goat-notes-directory-submission/>

Caney Creek Acres

Elizabeth Carpenter
Winnsboro, TX 75494
caneycreekacres@gmail.com
www.caneycreekacres.com
Raising Mini Nubians

Sunnyside MNG

Anita Clark
McNeal, AZ 85617
topdogac@yahoo.com
Mini Nubian Goats

Kirk Farms Nigerian Dwarf Goats

Sabrina Kirk
Findlay, OH 45840
sabrinakirk@gmail.com
www.kirksadairygoats.com
Breeding quality Nigerian Dwarves for show and milk

Texas Mini Milkers

THE Mini Dairy Goat Club of Texas!
info@texasminimilkers.org
<https://texasminimilkers.org/>
GREAT mini THINGS are HAPPENING in TEXAS -
Join us!

Oikos Farm

Elizabeth Inderwiesche
Pittsburg, TX 75686
bethlena83@gmail.com
Breeder of Mini Nubian Dairy Goats in Northeast
Texas

Udderly Outrageous Goat Boutique

<https://www.etsy.com/shop/UdderlyOutrageous>
NEW Goat tee and gift shop including MINI breeds!
Updated weekly!

Rafter O at Cordova Creek

Kerry O'Neal
Canyone Lake, Texas 78133
kerry@RafterO.com
<https://raftero.com>
Mini Nubians - healthy, friendly, and exceptional!

ZyGoat Farm

Michelle Taub
Alvin, TX 77511
zygoatfarm@gmail.com
www.zygoatfarm.com
Mini Nubian * Nubian * Nigerian Dwarf

Photos from the Mini Goat Folks

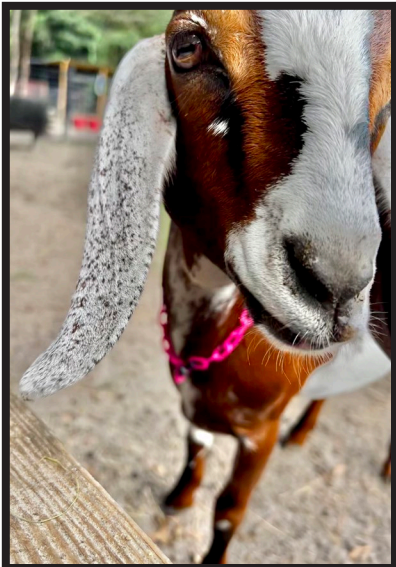
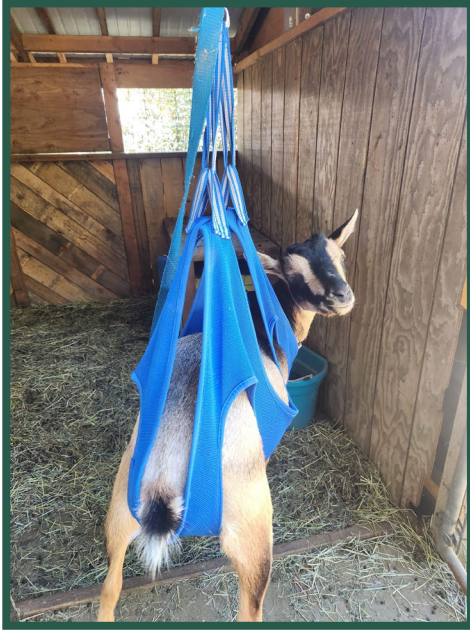


Photo left by Michelle Wittke. Photo below by Katie Scott

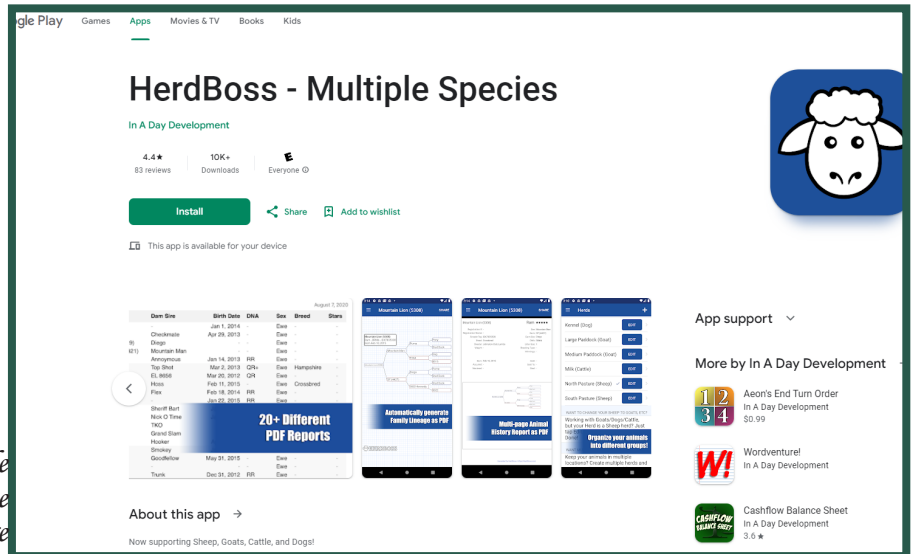


Goat Gadgets



The best tool. It's a dog nail carrier thing. My boyfriend installed a steel rod up at the top of my barn door and a ratchet strap! Good for medications, deworming, injections, hoof trims, and shaves!
Madison Weisgerber

*HerdBoss is available
on GooglePlay or the
Apple Store*



I'm not a big "apps on my phone" person but I did download and am adding all my goats info into HerdBoss. It's actually pretty easy to use and I like the idea of having that info easily available in my pocket.
Michelle Shawnee Eisenring Taub

Double Layer Pumpkin Pie

1/2 cup soft goat cheese
1 T. goat milk
1 T. sugar
**1 1/2 cups thawed frozen
whipped topping**
**1 prepared graham cracker
crust (6 oz)**

1 cup goat milk
1 can (16 oz.) pumpkin
**2 pkgs. (4-serving size) vanilla
flavor instant pudding**
1 tsp. ground cinnamon
1/2 tsp. ground ginger
1/4 tsp. ground cloves

Mix soft goat cheese, 1 T. goat milk and sugar in large bowl with wire whisk until smooth. Gently stir in whipped topping. Spread on bottom of crust. Pour 1 cup goat milk into large bowl. Add pumpkin, pudding mixes and spices. Beat with wire whisk until well mixed. (Mixture will be thick.) Spread over soft cheese layer. Refrigerate for 4 hours or until set. Garnish with additional whipped topping, if desired. Store leftover pie in refrigerator.

2022 305 DAY MILK TESTING RESULTS

27 Herds, 163 Enrolled, 45 Completed, 25 Qualified

TOP 10 IN MILK WEIGHT - MINI Nubian

Registered Name	Owner	AGE	HT	DIM	Milk lbs	BF lbs	BF%
Walk The Walk's Cricket *P	Nikki Crews	4-11	27.50	305	2166	79	3.7
Rusty Star Ranch SS Butterfly 2*P	Kellie Parker	2-02	26.50	305	1895	128	6.8
Ginger Top Farm Sapphire Blue 2*P	Kellie Parker	5-03	26.50	257	1882	125	6.6
Green Gables DT Southern Belle 4*P	Eliya Elmquist	4-00	26.50	305	1811	63	3.5
5M Maple *P	Bryan & Melissa Meadows	4-10	26.50	243	1739	74	4.3
Rusty Star Ranch SS Snickerdoodle 2*P	Kellie Parker	2-03	27.00	285	1734	101	5.8
Green Gables E Royal Buggy 2*P	Eliya Elmquist	2-11	28.00	305	1591	64	4.0
Genoa Meadows Pippi Long Ears *P	Katherine Turner	3-02	25.50	305	1489	68	4.6
Cedar Creek Ravenous Kisses *P	Carrie Plowman	3-01	25.50	211	1481	79	5.3
Green Gables FF Cali Eclipse 5*P	Eliya Elmquist	6-00	27.80	281	1466	54	3.7

TOP 10 IN BUTTER FAT WEIGHT - MINI Nubian

Registered Name	Owner	AGE	HT	DIM	Milk lbs	BF lbs	BF%
Rusty Star Ranch SS Butterfly 2*P	Kellie Parker	2-02	26.50	305	1895	128	6.8
Ginger Top Farm Sapphire Blue 2*P	Kellie Parker	5-03	26.50	257	1882	125	6.6
Rusty Star Ranch SS Snickerdoodle 2*P	Kellie Parker	2-03	27.00	285	1734	101	5.8
Walk The Walk's Cricket *P	Nikki Crews	4-11	27.50	305	2166	79	3.7
Cedar Creek Ravenous Kisses *P	Carrie Plowman	3-01	25.50	211	1481	79	5.3
5M Maple *P	Bryan & Melissa Meadows	4-10	26.50	243	1739	74	4.3
Dragon's Hollow Peaches N Cream *P	Sal & Cassandra Baldovinos	5-10	25.50	270	1392	73	5.2
Genoa Meadows Pippi Long Ears *P	Katherine Turner	3-02	25.50	305	1489	68	4.6
Green Gables E Royal Buggy 2*P	Eliya Elmquist	2-11	28.00	305	1591	64	4.0
Green Gables DT Southern Belle 4*P	Eliya Elmquist	4-00	26.50	305	1811	63	3.5

TOP 10 IN BUTTERFAT % - MINI Nubian

Registered Name	Owner	AGE	HT	DIM	Milk lbs	BF lbs	BF%
Rusty Star Ranch SS Butterfly 2*P	Kellie Parker	2-02	26.50	305	1895	128	6.8
Ginger Top Farm Sapphire Blue 2*P	Kellie Parker	5-03	26.50	257	1882	125	6.6
WindyWay Farm's Emma *P	Nichole DeShano	3-00	23.00	163	741	49	6.6
Rusty Star Ranch SS Snickerdoodle 2*P	Kellie Parker	2-03	27.00	285	1734	101	5.8
Carolina Dreams B Woodsprite *P	Breanna Gill	6-06	27.00	259	1038	60	5.8
Cedar Creek Ravenous Kisses *P	Carrie Plowman	3-01	25.50	211	1481	79	5.3
Lil' Rascals Calico *P	Carrie Plowman	1-09	26.25	196	1122	59	5.3
Dragon's Hollow Peaches N Cream *P	Sal & Cassandra Baldovinos	5-10	25.50	270	1392	73	5.2
Acadia P Elizabeth McCord 2*P	Suzy Sarna, DVM	2-10	25.00	275	1032	53	5.1
Rusty Star Ranch Jasmine 2*P	Kellie Parker	4-11	27.00	180	1080	54	5.0

2022 305 DAY MILK TESTING RESULTS

15 Herds, 72 Enrolled, 18 Completed, 14 Qualified

TOP 10 IN MILK WEIGHT - MINI LAMANCHA

Registered Name	Owner	AGE	HT	DIM	Milk lbs	BF lbs	BF%
Carpenter Creek GG Camembert *P	Natalie Epler	3-10	27.50	288	2451	105	4.3
FMCH Buck Creek Mac Krazy Kora *P	Shirley Daniels	6-00	28.25	251	2092	106	5.1
Carpenter Creek PTB Magnolia *2P	Natalie Epler	1-10	23.50	289	1361	84	6.2
4 Hands Senza *P	Christine Nutt	3-11	23.00	298	1354	74	5.5
Carpenter Creek GG Stella Jae *P	Natalie Epler	3-10	25.00	288	1307	79	6.0
Carpenter Creek PTB Meadow *P	Natalie Epler	1-09	25.00	288	1302	75	5.8
Carpenter Creek C Luna *P	Natalie Epler	2-10	23.50	291	1240	71	5.7
FCH Buck Creeks GP Ima Pop Star *P	Shirley Daniels	1-10	26.50	254	1088	57	5.2
Carpenter Creek C Lena *P	Natalie Epler	2-10	25.50	252	996	57	5.7
Carpenter Creek C Lettie 2*P	Natalie Epler	3-00	23.50	269	950	57	6.0

TOP 10 IN BUTTER FAT WEIGHT - MINI LAMANCHA

Registered Name	Owner	AGE	HT	DIM	Milk lbs	BF lbs	BF%
FMCH Buck Creek Mac Krazy Kora *P	Shirley Daniels	6-00	28.25	251	2092	106	5.1
Carpenter Creek GG Camembert *P	Natalie Epler	3-10	27.50	288	2451	105	4.3
Carpenter Creek PTB Magnolia *2P	Natalie Epler	1-10	23.50	289	1361	84	6.2
Carpenter Creek GG Stella Jae *P	Natalie Epler	3-10	25.00	288	1307	79	6.0
Carpenter Creek PTB Meadow *P	Natalie Epler	1-09	25.00	288	1302	75	5.8
4 Hands Senza *P	Christine Nutt	3-11	23.00	298	1354	74	5.5
Carpenter Creek C Luna *P	Natalie Epler	2-10	23.50	291	1240	71	5.7
FCH Buck Creeks GP Ima Pop Star *P	Shirley Daniels	1-10	26.50	254	1088	57	5.2
Carpenter Creek C Lena *P	Natalie Epler	2-10	25.50	252	996	57	5.7
Carpenter Creek C Lettie 2*P	Natalie Epler	3-00	23.50	269	950	57	6.0

TOP 10 IN BUTTERFAT % - MINI LAMANCHA

Registered Name	Owner	AGE	HT	DIM	Milk lbs	BF lbs	BF%
Carpenter Creek PTB Magnolia *2P	Natalie Epler	1-10	23.50	289	1361	84	6.2
Carpenter Creek PTB Noir Elfiba *P	Natalie Epler	1-00	23.50	268	755	47	6.2
Carpenter Creek GG Stella Jae *P	Natalie Epler	3-10	25.00	288	1307	79	6.0
Carpenter Creek C Lettie 2*P	Natalie Epler	3-00	23.50	269	950	57	6.0
Carpenter Creek PTB Novella *2P	Natalie Epler	0-11	24.00	267	786	47	6.0
Carpenter Creek PTB Marigold *2P	Natalie Epler	1-10	23.50	278	870	51	5.9
Carpenter Creek PTB Meadow *P	Natalie Epler	1-09	25.00	288	1302	75	5.8
Carpenter Creek C Luna *P	Natalie Epler	2-10	23.50	291	1240	71	5.7
Carpenter Creek C Lena *P	Natalie Epler	2-10	25.50	252	996	57	5.7
4 Hands Senza *P	Christine Nutt	3-11	23.00	298	1354	74	5.5

2022 305 DAY MILK TESTING RESULTS

7 Herds, 16 Enrolled, 8 Completed, 3 Qualified

TOP 10 IN MILK WEIGHT - ALL OTHER MINI

Breed	Registered Name	Owner	AGE	HT	DIM	Milk lbs	BF lbs	BF%
Mini Oberhasli	No Empty Acres Tiny Dancer Maya *P	Melissa Sargent	5-00	25.30	262	1877	72	3.84
Mini Oberhasli	White Rock Farm Root Beer *P	Kylie Edwards	6-08	26.00	274	1718	77	4.50
Mini Alpine	SerenityOaks BSB Raining On Sunday *P	Sara Evancho	1-01	24.25	312	1175	50	4.30

TOP 10 IN BUTTER FAT WEIGHT - ALL OTHER MINI

Breed	Registered Name	Owner	AGE	HT	DIM	Milk lbs	BF lbs	BF%
Mini Oberhasli	White Rock Farm Root Beer *P	Kylie Edwards	6-08	26.00	274	1718	77	4.50
Mini Oberhasli	No Empty Acres Tiny Dancer Maya *P	Melissa Sargent	5-00	25.30	262	1877	72	3.84
Mini Alpine	SerenityOaks BSB Raining On Sunday *P	Sara Evancho	1-01	24.25	312	1175	50	4.30

TOP 10 IN BUTTERFAT % - ALL OTHER MINI

Breed	Registered Name	Owner	AGE	HT	DIM	Milk lbs	BF lbs	BF%
Mini Oberhasli	White Rock Farm Root Beer *P	Kylie Edwards	6-08	26.00	274	1718	77	4.50
Mini Alpine	SerenityOaks BSB Raining On Sunday *P	Sara Evancho	1-01	24.25	312	1175	50	4.30
Mini Oberhasli	No Empty Acres Tiny Dancer Maya *P	Melissa Sargent	5-00	25.30	262	1877	72	3.84

2022 1 DAY MILK TESTING RESULTS

177 does enrolled, 161 completed their test, 72 Qualified

TOP 10 IN TOTAL POINTS

Breed	Goat Name	Owner	Height	DIM	Total Weight	Fat %	Total Pts
Mini Nubian	Ginger Top Farm Blue Fire Enya 2*P	Sabrina Massie	27.0	30	10.70	5.8	130
Mini Nubian	Rosies Critters Blaze *P	Rosie Shinkle/Rosies Critters	27.5	44	8.56	7.5	121
Mini Nubian	T Squared Acres Sunshine *P	Rosie Shinkle/ Rosies Critters	30.0	120	8.35	6.8	116
Mini Nubian	Alder Stacey *P	Susan Engwall	28.1	30	7.80	8.1	115
Mini Nubian	Cedar Creek SOO Chantily Lace *P	Beverly Holley	26.8	35	11.20	3.8	112
Mini Nubian	Rosies Critters Blaze *P	Rosie Shinkle/ Rosies Critters	27.0	107	10.03	4.2	108
Mini Nubian	Rosies Critters Clowie *P	Rose Shinkle	28.3	53	9.33	5.0	107
Mini Nubian	Sonflower Ranch's Andromeda *P	Megan Archer	26.5	28	10.40	3.9	104
Mini Nubian	Soaring Heart's Pink Cashmere 3*P	Kathleen Naylor	25.0	76	7.96	6.0	102
Mini Nubian	Echo Hill's Saffires & Rubies *P	Brittany Roy	27.0	37	9.30	4.6	101
Mini Nubian	MilkCreek Ridge Buttercup *P	Summer Rudolph	25.0	26	10.10	3.9	101

TOP 10 IN MILK WEIGHT

Breed	Goat Name	Owner	Height	DIM	Total Weight	Fat %	Total Pts
Mini Nubian	Cedar Creek SOO Chantily Lace *P	Beverly Holley	26.8	35	11.20	3.8	112
Mini Nubian	Ginger Top Farm Blue Fire Enya 2*P	Sabrina Massie	27.0	30	10.70	5.8	130
Mini Nubian	Sonflower Ranch's Andromeda *P	Megan Archer	26.5	28	10.40	3.9	104
Mini Nubian	MilkCreek Ridge Buttercup *P	Summer Rudolph	25.0	26	10.10	3.9	101
Mini Nubian	Rosies Critters Blaze *P	Rosie Shinkle/ Rosies Critters	27.0	107	10.03	4.2	108
Mini Nubian	Bifrost Farms Verdandi *P	Michelle Wittke	26.5	112	9.64	3.8	100
Mini Nubian	Windswept's Basil *P	Summer Rudolph	24.5	45	9.40	3.3	89
Mini Nubian	T Squared Acres Sunshine	Rosie Shinkle/Rosies Critters	29.8	56	9.35	1.2	68
Mini Nubian	Rosies Critters Clowie *P	Rose Shinkle	28.3	53	9.33	5.0	107
Mini Nubian	Echo Hill's Saffires & Rubies *P	Brittany Roy	27.0	37	9.30	4.6	101

TOP 10 IN BUTTERFAT %

Breed	Goat Name	Owner	Height	DIM	Total Weight	Fat %	Total Pts
Mini Nubian	Alder Stacey *P	Susan Engwall	28.1	30	7.80	8.1	115
Mini Nubian	Rosies Critters Blaze *P	Rosie Shinkle/Rosies Critters	27.5	44	8.56	7.5	121
Mini Nubian	T Squared Acres Sunshine *P	Rosie Shinkle/ Rosies Critters	30.0	120	8.35	6.8	116
Mini Nubian	Rosies Critters Molly *2P	Rosie Shinkle/ Rosies Critters	27.0	71	7.09	6.7	96
Mini Nubian	Goat Trails Apple Of My Eye 3*P	Kathy Naylor	24.0	141	6.92	6.7	98
Mini Lamancha	Thomas Kids PC Sally	Austin Thomas	23.0	86	3.76	6.4	52
Mini Nubian	Rosies Critters Fay 2*P	Rosie Shinkle/ Rosies Critters	27.0	50	7.38	6.2	95
Mini Nubian	Treestar Rambling Rose 3*P	Elisabeth Montague	24.8	87	5.90	6.2	78
Mini Nubian	Faelynn's Calipsa *P	Peggy Swager	26.0	99	5.83	6.2	78
Mini Nubian	Cedar Creek AWR Moonshadow	Beverly Holley	22.8	48	5.11	6.1	65